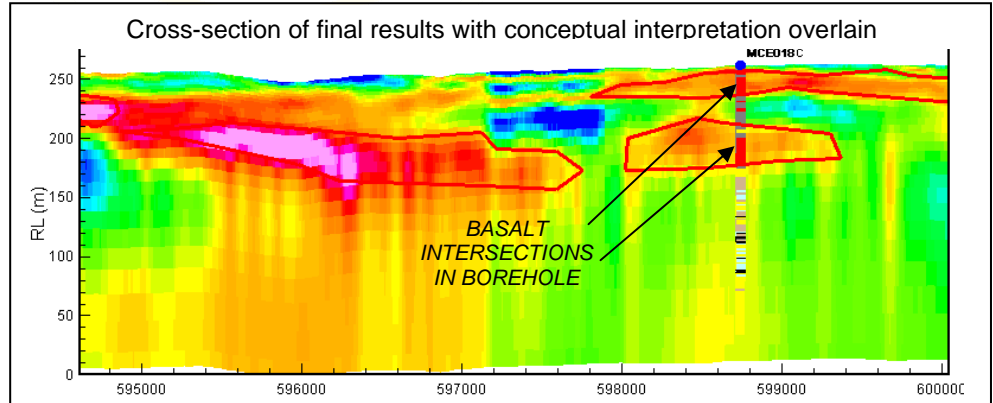


# Carabella Resources Coal Exploration

## Airborne surveying for drilling optimisation

*“The SkyTEM data has allowed us to improve the efficiency and effectiveness of our drilling program and improve our model of the resource”.*

**Mitch Jakeman**  
Managing Director  
Carabella Resources



With hundreds of millions of dollars spent on drilling for coal exploration each year, GroundProbe has worked with Carabella Resources to use the unsurpassed resolution of the SkyTEM airborne technology to provide cost and time reductions in their exploration program.

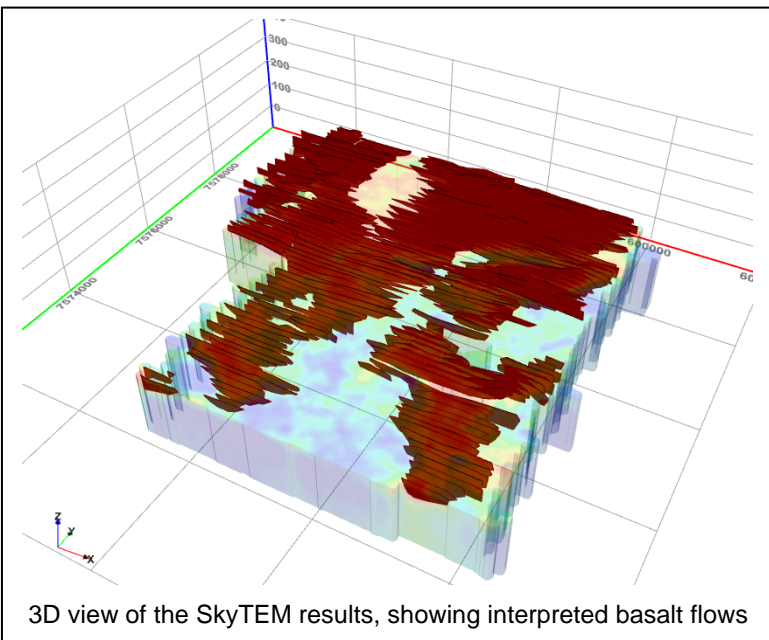
The airborne program was flown in only a few days and covered over 2,500Ha, with preliminary results delivered within 48 hours of data acquisition.

The joint interpretation of the data performed by GroundProbe and Carabella has shown the airborne system to provide information on a number of features, including:

- Location of basalt flows
- Indication of depth of weathering
- Inferred areas of reduced likelihood of coal seams



The SkyTEM system in action



3D view of the SkyTEM results, showing interpreted basalt flows

The data correlation with drilling (above) clearly shows the benefits of SkyTEM, with no other airborne system able to deliver data to such high resolution from surface to over 100m depth.

This service means that Carabella can more effectively target its drilling program over key areas, reducing the cost and time required. In addition, drillhole casing depths can be optimised and the geological model is more accurate than would be possible with drilling alone. It may also prove useful for overburden characterisation.

*GroundProbe thank the management of Carabella Resources for allowing the opportunity to produce this document.*